



Newsletter

AUTUMN 2009

VOLUME 4 (2)

President's Message

Dear members and friends of the ESFR,

The preparations for the 5th ESFR Congress on the topic of “*Family transitions and families in transition*” to be held in Milan are in full swing. The programme structure has been established and the first Call for Papers took place in August. This cfp and other information on the Congress are available at the Internet address <http://esfr2010.unicatt.it/>.

Whilst the preparations for the 5th Congress are progressing well, we already know where the 6th Congress will be taking place. The Norwegian colleagues around Lars Gulbrandsen from NOVA and Ann-Helén Bay from ISR in Oslo have expressed a willingness to organise the next Congress in Lillehammer in 2012. Our heartfelt thanks go out to both institutions and their employees for this.

It is also highly welcome that the first issue of the periodical “Family Science” will be appearing in the first quarter of 2010. Once again, I would like to invite all our colleagues to send articles to the periodical's editor Judith Dubas.

Judith Dubas handed over responsibility for the newsletter after the last issue. She has made a major contribution in her functions as editor of the periodical and Secretary of the ESFR and continues to do so. I would like to thank her for this and for her work on the previous newsletters.



ESFR Executive Board

President:

Norbert F. Schneider (Germany)

Past President:

Hans-Georg W. Voss (Germany)

President Elect:

Camillo Regalia (Italy)

Secretary:

Judith Semon Dubas (The Netherlands)

Treasurer:

Caroline Vandeleur (Switzerland)

Board Members:

Maria Beisert (Poland)

Lars Gulbrandsen (Norway)

Kimmo Jokinen (Finland)

Ruth Limmer (Germany)

Ad Hoc (Honorary) Board Members:

Jan Gerris (The Netherlands)

Meinrad Perrez (Switzerland)

Eugenia Scabini (Italy)

Klaus Schneewind (Germany)

Student Member:

Silvia Ruppenthal (Germany)

Silvia Ruppenthal is the new newsletter editor. She will be carrying out this task with the assistance of Caroline Vandeleur. I would like to thank both of them for stepping forward and continuing the newsletter and I wish them lots of fun and success.

The ESFR's Internet pages moved to a new provider in August. We have taken this opportunity to somewhat modernise the presentation and include some new sections. I would like to thank Hans-Georg Voss, who has administered the ESFR's Internet presence so far, for his committed work. If you have any suggestions or would like to have something posted on the ESFR's Web page, please contact the new webmaster detlev.lueck@uni-mainz.de.

In my most recent presidential address, I suggested we should consider establishing research networks. The reactions I have received have been highly positive. The ESFR is therefore supporting the establishment of such RNs. Two RNs have been proposed on the topics of “Migration and Mobility” and of “Childcare”. Once again, I would like to ask all members to become actively involved and to make suggestions for further RNs.

More information about the ESFR is available at www.esfr.org

At its latest session, the ESFR's Executive Committee decided to award its first Young Scientist's Prize during the 5th Congress for the best reviewed research article published within the last two years. All graduate students and recent post docs who finished their Ph.D. after 2006 are invited to take part. The prize is 300 Euro and free entrance to the Congress. Nominations are also highly welcome here.

Overall, developments have been highly encouraging in recent months, and I hope that the positive trend in ESFR affairs is something that will last. I would like to thank everyone who is contributing to this upturn in ESFR's fortunes.

Norbert F. Schneider
President of the ESFR 2008-2010



Institute Spotlight

Institute for Social Research, Oslo

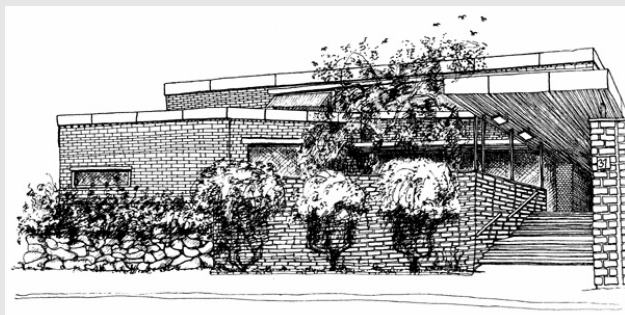
About ISF: The Institute for Social Research (ISF) was established as an independent foundation in 1950 and the Institute has been multidisciplinary in its orientation since then. Its activities comprise research within all of the social sciences, as well as history. ISF provides one of the few contemporary social science fora outside the universities which has not limited itself to the study of one single sector of society. The Institute's research projects are divided into five areas: employment and working conditions; gender and society; civil society in transition; political institutions, voting and public opinion; and international migration, integration and ethnic relations.

The history of the institute and its current position in Norwegian social research bears witness to its desire to avoid sharp distinctions between basic and applied research. The interplay between basic and applied research is reflected in the position of ISF as a contract research institute with high academic ambitions. This is also mirrored in the close contact with the University of Oslo and the Research Council of Norway on the one hand, and with several ministries and private sector agencies on the other. One important aim of the institute is to contribute to the recruitment and training of young researchers and thus a primary task of its research directors is supervision and planning in order to foster long term careers in research. Other objectives include studying social and political change, developing skills and methods for analysing social conditions and informing and creating understanding of social structures and change.

Funding: The Research Council of Norway is the most important source of funding. The funding consists of a basic grant, programmes and projects that ISF has won in competition with other research institutes. Other important sources are professional and industrial organisations, ministries and governmental institutions. Researchers at ISF also take part in international networks and projects financed by the EU and the Nordic Council.

The ISF board has six members. While the Research Council of Norway appoints one member, the University of Oslo and the ISF board members appoint two each. ISF staff elect one member.

For more information please visit www.socialresearch.no





European Society on Family Relations 5th Congress

29 September- 2 October 2010
Catholic University of the Sacred Heart, Milan

Dear members and friends of the ESFR,

We are glad to announce the 5th Congress of the European Society on Family Relations (ESFR), titled “*Family transitions and families in transition*” (<http://esfr2010.unicatt.it/>). The Congress will take place in Milan (Italy) from September 29th to October 2nd, 2010, hosted by the Athenaeum Centre for Family Studies and Research at the Catholic University of Milan.

The 5th ESFR Congress will focus on the transitions that the family faces during the course of life, the identification of resources and risks associated with them, and the processes that families go through whenever a transition occurs. The Congress will also focus on families who are in transition, as they are involved in the economic, social and cultural events characterising the contemporary world, and thus have to manage the challenges prompted by setbacks like financial problems, job mobility or loss, natural disasters, political changes, and so on.

The study of the family facing different kinds of transitions and being in the flow of transitions allows researchers from various disciplines to focus on the relational, symbolic, and structural aspects that constitute the family itself, while identifying resources, risks, strengths and weaknesses.

The Congress therefore aims to explore the dynamics and the context of family transitions/families in transition through a number of key themes, such as major family transitions; critical life events affecting family life; major contextual events affecting family life; intra and intergenerational processes describing/explaining the transitions that families face during their life; strategies and approaches that support family transitions and families in transition at political, social, and relational levels.

Congress program:

The Congress will host, in plenary sessions, the contributions of prominent scholars from different disciplines: prof. Brian K. Barber (University of Tennessee, USA), prof. Pierpaolo Donati (University of Bologna, Italy), prof. Frank D. Fincham (Florida State University, USA), prof. Johannes Huinink (University of Bremen, Germany), prof. emeritus Kurt Lüscher (University of Constance, Germany), prof. Margaret Strobe (Utrecht University, Netherlands), prof. Froma Walsh (University of Chicago, USA).

Prof. Gian Carlo Blangiardo (University of Milano-Bicocca, Italy), prof. Carlo F. Perali (University of Verona, Italy), prof. Gisela Trommsdorf (University of Konstanz, Germany), and prof. Mirjana Ule (University of Ljubljana, Slovenia) will take part in a round table titled “Raising a new generation: a challenge for the family in today’s Europe”.

The Congress is also meant to give visibility, in workshops and invited symposia mode, to papers that address issues related to the main theme either in a single country or in a comparative perspective, from a variety of disciplinary backgrounds.

More information is available at <http://esfr2010.unicatt.it/>

Congress organizational committee:

The Congress is organized by prof. Camillo Regalia, prof. Giovanna Rossi, and prof. Rosa Regina Rosnati (Athenaeum Centre for Family Studies and Research – Catholic University of Milan).

Congress host:

Athenaeum Centre for Family Studies and Research

Director: Prof. Eugenia Scabini

Website: http://centridiateneo.unicatt.it/en/athenaeum_centre_for_family_research_and_studies

The Athenaeum Centre for Family Studies and Research was founded in 1976, with the purpose of pursuing family research and applied psychology. The steering committee includes: Lorenzo Ornaghi (President), Eugenia Scabini (Director), Giovanna Rossi (Secretary), Mario Gatti, Franco Anelli, Gian Carlo Blangiardo, Francesco Botturi, Luigi Campiglio, Vittorio Cigoli.

Members of the scientific committee are: Giuseppe Anfossi, Guy Bodenmann, Vincenzo Cesareo, Francesco D'Agostino, Pierpaolo Donati, Raffaella Iafrate, Luigi Pati, Federico Perali, Camillo Regalia, Eugenia Scabini and Norbert Schneider.

The interdisciplinary collaboration between psychologists and sociologists has aided in the establishment of a theoretical and methodological framework of reference, which is known as the relational-symbolic approach to the psycho-social and clinical perspective (Scabini & Cigoli, 2000) and the relational approach in a sociological perspective (Rossi, 2001).

Within this perspective, the family is conceptualized as a whole, and is characterized by gender, generation and differences in lineage. The family is considered as a social subject with its own identity and a unit for social policies and clinical intervention as well as scientific analysis.

This perspective guides both the research and the intervention in the following areas:

- Adolescents and young-adults;
- Couple relationship;
- Parent-child relationship;
- Family and culture;
- Family, community, and social policies.

Congress venue:

The Congress will take place at the Catholic University of Milan.

Largo Gemelli, 1

20123 Milan – Italy

www.unicatt.it/ucsc_EV.asp

The Catholic University of Milan was founded in 1921 by father Agostino Gemelli, one of the most prominent psychologists of this time. With its 41,367 students, and 1,411 professors and researchers and 4970 staff members, the Catholic University is by far the biggest private University in Europe, excelling in the diverse study opportunities that it offers, in the humanities, as well as in the sciences. The Milan campus remains the principle, as well as the historic, site of the Catholic University, although there are now five other branches of the university which have been opened across Italy. From its 68 students in 1921 to the over 30,000 currently enrolled, it is evident how the Catholic University's Milan campus has given birth to an active and influential academic community which includes 13 departments, several institutes, 35 research centers and 9 faculties.

Congress sponsors:

The congress is sponsored by the *Doha International Institute for Family Studies and Development* (Qatar Foundation, Doha-Qatar) and under the patronage of *Regione Lombardia – Famiglia e Solidarietà Sociale* (Italy) and *Comune di Milano – Famiglia, Scuola e Politiche Sociali* (Italy).

Camillo Regalia
Head of LOC

5th ESFR Congress Announcement - Call for Papers

Family transitions and Families in transition

Catholic University of Milan, Italy

29 September - 2 October 2010

The 5th ESFR Congress will be focused on the transitions that the family faces during the course of life, the identification of resources and risks associated with them, and the processes that families go through whenever a transition occurs.

Transitions have for long been a central concern in family studies. The key transitions in the family life cycle are brought about by predictable or unpredictable events like gaining new members (marriage, birth, adoption...), losses or threats of loss (death, illness...) and breaking up of existing relationships (separation, divorce, migration, left behind families...). Other equally specific events appear less focused and delimited, such as the transition to adulthood or old age. Families therefore have to reorganize their relationships in response to the challenges set off by these transitions.

Moreover, families are always in transition, as they are involved in the economic, social and cultural events characterising the contemporary world, and thus have to manage the challenges prompted by setbacks like financial problems, job mobility or loss, natural disasters, political changes, and so on. All the transitions that the family experiences may either point to a difficulty to cope with change, or represent valuable opportunities to transform relationships. When a transition occurs, the family finds itself at a crossroad: it can either re-organize its relations or let them degenerate. Hence in the process of coping with the difficulties brought about by the critical events of the family life cycle and the social context, families may access to both internal and external resources.

The study of the family facing different kinds of transitions allows researchers from various disciplines to focus on the relational, symbolic, and structural aspects that constitute the family itself, while identifying resources, risks, strengths and weaknesses.

The Congress aims to explore the dynamics and the context of family transitions/families in transition through a number of key themes:

- * Major family transitions: transition to married life; transition to parenthood (including adoption and foster families); transition to adolescence and adulthood; transition to old age; transition to divorce and remarriage...
- * Critical life events affecting family life: illness, presence of disabled members, death of a member, migration...
- * Major contextual events affecting family life: political changes and family development, cultural changes and family structure, economic hardship, welfare state changes...
- * Intra and intergenerational processes describing/explaining the transitions that families face during their life.
- * Strategies and approaches that support family transitions and families in transition at political, social, and relational level.

We invite papers that address these and other issues related to the main theme either in a single country or in a comparative perspective. All disciplines are welcome.

The deadline for submitting an abstract of not more than 250 words is 1st February 2010.

In case of abstract acceptance, the author(s) will be invited to present a full paper which may be selected for a possible publication either in the official ESFR journal, *Family Science*, or in *The family in the New Millennium*, the Doha Institute publication, or in the Catholic University Athenaeum Centre for Family Studies and Research's journal, *Studi Interdisciplinari sulla Famiglia*.



Family Science: Getting ready for the launch and accepting manuscripts for review

I am delighted to write that preparations for the launch of ESFR's Flagship journal, *Family Science*, are well underway. Several plenary speakers from past conferences have agreed to contribute a review or empirical paper and unsolicited manuscripts are now being accepted for consideration for publication. The first issue of the journal will appear in print in January 2010. The topics of articles for the flagship year are wide ranging (intergenerational exchange, family process, marital relationships, etc.) and are sure to appeal to a large mix of family researchers, practitioners and policy makers. Four review articles will be appearing in the first issue to which I would like to draw your attention (for the research articles you will have to wait until the journal appears).

First, Michael Pleuss and Jay Belsky review cutting-edge theory and research on person-environment interactions, contrasting the diathesis-stress model to the differential susceptibility hypothesis. In diathesis-stress models some individuals are more vulnerable to the effects of negative experiences (such as harsh parenting) than are others who are relatively resilient to them; according to the differential susceptibility hypothesis, individuals are not just more reactive to the negative aspects of the environment but are also more reactive to positive aspects of the environment (such as positive parenting). Thus, children who have biological, temperamental or behavioral characteristics that may put them at risk in one environment, are more likely to do even better than a not-at-risk child when exposed to favorable or enriched circumstances. Thus, individuals are more susceptible to environmental influences for better and for worse (not just for worse as in the diathesis-stress model). Pleuss and Belsky review the latest research addressing this issue focusing on several different behavioral and genetic markers of susceptibility and the effects of parenting and raise several unanswered questions.

The second review by Bakermans-Kranenburg and van IJzendoorn also focuses on the differential susceptibility hypothesis focusing on the latest gene-environment interaction research that has investigated this hypothesis. Their review includes several parenting intervention studies that document the fact that children who

are more susceptible are the ones more likely to show gains in intervention studies. These findings have important implications for how best to identify and target which persons might benefit most from interventions especially when implementation funds are limited. Moreover, the fact that the most susceptible (often cast at the most difficult) may also show the most gain suggests that parents and teachers involved in the intervention can be encouraged by knowing that these problematic children are also the most likely to respond to the hard work involved in working with these children. Research identifying which markers stand for vulnerability and which represent differential susceptibility is still in its infancy however. Nevertheless, this is an exciting avenue for research that warrants more attention in the family research community. Experts on assessing the family environment need to build bridges with experts in the area of genetics in order to get a more complete understanding of these complex gene-environment links.

The third review switches gears and uses a sociological perspective. Here Paul Amato and Spencer James compare studies on divorce conducted in the United States and Europe focusing on the demographic and economic predictors of divorce, the estimated effects of divorce on adults, and the estimated effects of divorce on children. Although they identify several commonalities, they also identify several gaps in the research base making cross-national comparisons difficult. For example, there are

fewer European studies that focus on moderators of the link between divorce and child outcome compared to the US and it remains an empirical question as to whether such factors as parental education moderate the link in the same way among European countries given the diversity in social structure and policy across nations. Amato and James make several suggestions about where research on divorce should be headed both on the European and American front.

Finally, the fourth review article, by Bill Cook, addresses an important methodology issue with respect to family research: if one is trying to understand and investigate the nature of a speci-

fic relationship it may be more informative to compare that type of relationship (such as the marital relationship) to a different type of relationship (such as the sibling relationship) in order to reveal what makes a particular type of relationship special. Cook illustrates this point by citing examples of research on marital, sibling and intergenerational relationships as well as gender differences. Moreover, this article provides the reader with guidelines concerning the appropriate analytic methods that should be used depending on a specific research interest. This article should serve as a handy reference tool for anyone interested in relationship research.

I hope that these brief summaries of the review articles peak your interest in the journal and that you pass on information about the journal to interested others.

Are you interested in contributing to the journal?

For the next several months manuscripts will be handled through e-mail until the internet submission site is operational. If you have a manuscript that you would like to submit to the journal please mail it to me at

familyscience@uu.nl

More specific details about the journal including author instructions can be found at the website:

<http://www.tandf.co.uk/journals/titles/19424620.asp>

Judith Semon Dubas
Editor Family Science

References:

- Amato, P.R. & James, S. (2010, in press). Divorce in Europe and the United States: Commonalities and Differences Across Nations. *Family Science*.
- Bakermans-Kranenburg, M.J., & van IJzendoorn, M.H. (2010, in press). Parenting matters. *Family Science*.
- Cook, W.L. (2010 in press). The comparative study of interpersonal relationships. *Family Science*.
- Pleuss, M. & Belsky, J. (2010, in press). Children's differential susceptibility to effects of parenting. *Family Science*.

ESFR Non-Members take note: Personal subscriptions to the journal via the publisher (Taylor and Francis) are more expensive than joining ESFR and receiving the journal as a membership benefit. So join ESFR today!

Network for doctoral workshops of the ESFR

In April, the first ESFR doctoral workshop was held in Fribourg/Switzerland. It was a successful kick-off of what is to become an open ESFR network for doctoral training.

What is the purpose of the open network?

The network combines offers of *doctoral workshops* from different research groups of ESFR members. The network aims to help establish a comprehensive doctoral training programme, bringing together the expertise and efforts of multiple research groups and Universities. This endeavour benefits from international synergies and completes the current academic programs for Ph.D. students in the domain of family research.

Format of doctoral workshops

An ESFR-doctoral workshop incorporates two key aspects: (a) the course has a *theoretical focus* within the area of family research, and (b) deals with a specific *methodological issue* relevant for family research (statistical analyses, assessment, research designs, etc.). ESFR sets high standards for its workshops: local organizers invite one or more leading scholars in the field, and create the opportunity for students to meet with these scholars and discuss their own research during the workshop. To ensure these possibilities, the number of participants is restricted to a maximum of 15 Ph.D. students. Finally, the workshop should provide profound insight into a matter, spanning over at least three days. The number of ECTS for a workshop is attributed according to its volume and time schedule and may vary across workshops.

Participation, funding and accreditation

Access to ESFR workshops is granted by the local organizers. Ph.D. students who want to attend an ESFR workshop apply for admission to the workshop with a letter of recommendation from their supervisor and a short description of their research topic.

Local organizers are responsible for financial issues related to teaching and organization. They try to keep participation fees as low as possible. Ph.D. students are responsible for the costs of their own accommodation and transportation. Students are encouraged to ask for financial support from their universities. ESFR may provide modest financial

support to students and their home institutions if they lack the necessary financial resources..

In order to be certified as an “ESFR-Doctoral Workshop”, the workshop program has to be reviewed and accredited by the Scientific Committee of the ESFR.

The ESFR-Doctoral Workshop in Fribourg

The University of Fribourg/Switzerland hosted the first ESFR Doctoral Workshop, which focused on *Investigating Interpersonal Sensitivity and Emotion Regulation in Couples and Families* (April 27th to May 1st, 2009). Twelve participants from four countries attended the workshop.

The first 2-day module introduced the investigation of empathic accuracy and interpersonal emotion regulation. Prof. William Ickes (University of Texas, Arlington), and Prof. Marc S. Schulz (Bryn Mawr College, USA), introduced the topic and their own research, and provided a discussion and counseling on doctoral students’ individual projects, and participants presented their doctoral projects, their current problems and issues.

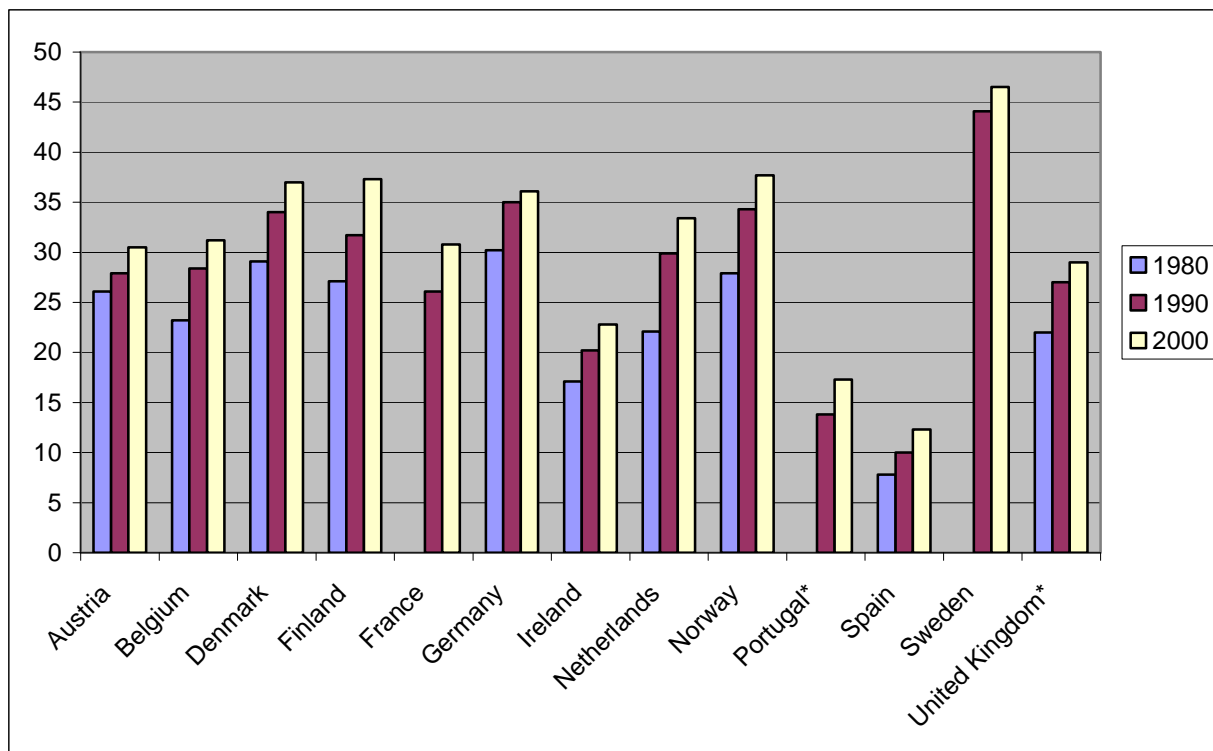
The second 3-day module provided an introduction to the analysis of dyadic data. This module was provided by Prof. William Cook (Maine Medical Centre, Portland, USA), in collaboration with Dr. Dominik Schoebi, and Dr. Peter Wilhelm (both from the University of Fribourg, Switzerland). Relevant approaches were discussed in four workshops, centering on the analysis of actor- and partner-effects using SEM and multi-level approaches. Applications and data analytic issues of students’ own data were discussed in small groups.

Additional insight into various research areas was provided by Dr. Andrea Horn (*Intra- and interpersonal emotion regulation in intimate relationships*), Prof. Michael Reicherts (*“Emotional Openness” a model of affect processing: theory, results, and applications*), and Dr. Peter Wilhelm (*Empathic inference in couples’ daily life*) (all are members of the research group on interpersonal emotion regulation directed by Prof. M. Perrez and Prof. M. Reicherts at the University of Fribourg).

Meinrad Perrez
University of Fribourg

Family Facts and Findings

European Solo Living Trends. One person households as a % of all households, 1980 to 2000*



Source: United Nations Economic Commission for Europe (UNECE) Statistical Division Database, compiled from national official sources.

* Figures for 2001

Submitted by Roona Simpson

Centre for Research on Families and Relationships, University of Edinburgh

Changes: Best wishes to the new newsletter editors!

Dear ESFR members,

As you have probably noticed the ESFR newsletter has undergone significant change: a new look, a new editorship, and an interactive web component. As first editor of the newsletter I would like to thank all of you who contributed to the newsletter either directly by providing me with articles or graphs or indirectly by supporting these efforts through sharing the newsletter with colleagues and interested others. Change is always exciting. I wish all of the best to Silvia Ruppenthal and Caroline Vandeleur as they take on this challenging but rewarding task. I would also like to encourage others to get involved with the newsletter. Send in reports about the family research that is going on in your university or your department – put what you do in the spotlight. Be an active participant: share information about conferences, interesting websites, or recent statistics on the family. Get involved!



Judith Semon Dubas
former newsletter editor

Current Research Projects of some ESFR members

Evaluation of the relational quality of residential care centers for minors within family-based and educational communities implementing foster care

Project description:

The research aims at investigating the relational quality of children residential care centres implemented by Regione Lombardia. This type of intervention represents a specific example of subsidiarity as it combines together the “natural” family relationships of minors with the “foster” ties of family-like educational homes. Investigating the relational dimensions of the quality of such programs is useful to acquire more information about the effectiveness of such interventions and to bring forward a different approach to quality, with more emphasis on the significance of relationships.

Contact:

Rossi G. (giovanna.rossi@unicatt.it),
Bramanti D. (donatella.bramanti@unicatt.it),
Carrà E. (elisabetta.carra@unicatt.it);
Moscatelli M. (matteo.moscatelli@unicatt.it),
Athenaeum Centre for Family Studies and Research,
Catholic University of Milan, Italy

Evaluation of good practice in the field of healthcare and social programs for the family

Project description:

The research aims at evaluating good practice in the field of healthcare and social programs for the family. Good practice is interventions able to regenerate social capital, working on the relational dimensions at all levels: from the *project* designing to the implementation of the intervention. The “good practice approach” is highly innovative in the quality assessment field as it is able to capture a program’s potential in generating social capital.

Contact:

Rossi G. (giovanna.rossi@unicatt.it),
Boccacin L. (lucia.boccacin@unicatt.it),
Bramanti D. (donatella.bramanti@unicatt.it),
Carrà E. (elisabetta.carra@unicatt.it),
Meda S. (stefania.meda@unicatt.it),
Athenaeum Centre for Family Studies and Research,
Catholic University of Milan, Italy

Reconciling family and work: New Challenges for Social Policies in Europe

Project description:

The research aims at stimulating a re-thinking of family and work conciliation on the cultural level which would guide the planning of societal instruments of action for conciliation, taking as a starting point the recognition of mutual implications and responsibilities of both work and family, and involving all the actors (market, families, State, local government agencies, Third sector).

Contact:

Rossi G. (giovanna.rossi@unicatt.it),
Mazzucchelli S. (sara.mazzucchelli@unicatt.it),
Bosoni L. (letizia.bosoni@unicatt.it),
Athenaeum Centre for Family Studies and Research,
Catholic University of Milan, Italy

Children from ‘cost’ to ‘investment’: time and services as resources to sustain the transition to parenthood

Project description:

The research aims at investigating forms of support, set up by different societal entities, to promote and sustain the transition to parenthood as a specific task that the family has to face in the course of life. Nowadays, in fact, the transition to parenthood is becoming an increasingly complex challenge as, in the process of raising children, parents have to face the difficult challenge of care, balancing between risks and resources not only at a material/ structural level, but also on a symbolic/relational basis.

Contact:

Rossi G. (giovanna.rossi@unicatt.it),
Carrà E. (elisabetta.carra@unicatt.it),
Mazzucchelli S. (sara.mazzucchelli@unicatt.it),
Bosoni L. (letizia.bosoni@unicatt.it),
Athenaeum Centre for Family Studies and Research,
Catholic University of Milan, Italy

Family, migration, second generations: the challenge of the identity in a pluricultural world

Project description:

The research aims at investigating the issue of the second generation of immigrants in Italy, through an exploration of their migration projects, their family relationships, social ties and friendships; their repre-

sensation of their rapport with the school and other social services. The study is based on a specific perspective, which considers migration as a family event as it involves the family at all levels and stages of the process and deeply influences all the family relationships, including the socialization and identity processes of the new generations.

Contact:

Rossi G. (giovanna.rossi@unicatt.it),
Meda S. (stefania.meda@unicatt.it),
Athenaeum Centre for Family Studies and Research,
Catholic University of Milan, Italy

Ethnic Identity of young intercountry adoptees: a family perspective

Project description:

The present research project is focused on the ethnic and adoptive identity formation among internationally adopted adolescents and young adults. It is also aimed to analyze whether and to which extent some contextual variables (i.e. parent-child relationship and parents' cultural socialization strategies) influence adoptees' identity processes, and to verify if it is related to adoptees' well-being. A questionnaire will be administered to 180-200 international adoptees and their families (mother and father).

Contact:

Rosnati Rosa (rosa.rosnati@unicatt.it),
Athenaeum Centre for Family Studies and Research,
Catholic University of Milan, Italy

Family alliance as a moderating factor between maternal depressive state in the postpartum period and child outcomes: a developmental study of family processes

Project description:

Affect disorders in mothers are common during the postpartum period, covering a spectrum from light dysphoria or depressive mood to clinical depression, designated as a postpartum depression. These postpartum disorders have an impact on the child's development, with regard to adaptation or to psychopathological disorders. On one hand, the main variable proposed to explain this impact on the child is the disturbance of mother-child interactions: the mother, preoccupied by her depressive affects, is not sensitive to the child's signals. On the other hand, the father—mother relationship has been described as having a major impact on the mother's depressive state, either as a factor of support (in the child psychiatry literature) or as a factor aggravating

maternal pathology (in the family therapy literature about marital conflict). As these research traditions have developed separately, an integrative approach is necessary. The aim of this research is to comprehensively study the links between the father-mother-child relationship, conceptualized as the family alliance, and the mother-child relationship and the child's development. A longitudinal design is used, with three points of measurement: 3, 9 and 18 months after the child's birth. The methods are: (i) assessment of dyadic mother-child and triadic mother-father-child interactions in semi-standardized laboratory situations by direct observation (free play situations, Lausanne Trilogue Play, PicNic Game), (ii) diagnosis of maternal depression by structured interview and self-reported questionnaires (DIGS, MADRS), (iii) testing of the child's psychomotor development (Bayley) and (iv) assessment of exploratory variables by parent-reported questionnaires (EAS, CBCL, etc.). This research started in April 2009 and will last until March 2012. A continuation is foreseen to assess child development up to entry into school.

Contact:

Main applicants:

Prof. N. Favez (nicolas.favez@unige.ch),
University of Geneva, Uni Mail, 40 Boulevard du
Pont-d'Arve, 1211 Geneva 4, Switzerland,

Co-applicants :

Prof. F. Stiefel, DP-CHUV, University of Lausanne,
Dr. F. Frascarolo CEF, IUP, DP-CHUV, University
of Lausanne, Prof. J.-N. Despland, IUP, DP-CHUV,
University of Lausanne, Switzerland

Interpersonal emotion regulation in couples and families

Further information:

www.affective-sciences.org/family-overview

Selected Publications:

Rieder, S., Perrez, M., Reicherts, M. & Horn, A.
2008. Interpersonal emotion regulation in the
family: a review of assessment tools. In A.M.
Fontaine & M. Matias (Eds.), *Family, Work and
Parenting. International Perspectives* (p. 17-45).
Porto: Livpsic.

Vandeleur, Jeanprêtre, Perrez, Schoebi (in press)
Cohesion, satisfaction with family bonds and
emotional well-being in families with
adolescents, *Journal of Marriage and Family*

Contact:

M. Perrez (meinrad.perrez@unifr.ch) & M. Reicherts with A. Horn (coordinator), A. Debrot, L. Molina, M. Christen

Development of Ambulatory Assessment tools for assessing behavior and experience in the natural context

Further information:

<http://www.ambulatory-assessment.org/index.php?id=38>

Selected Publications:

Fahrenberg, J., Myrtek, M., Pawlik, K. & Perrez, M. 2007. Ambulatory Assessment – Monitoring Behavior in Daily Life Settings, *European Journal of Psychological Assessment*, 23(4), 206-213

Perrez, M., Reicherts, M., Hänggi, Y., Horn, A.B., Michel, G., Schöbi, D. & Wilhelm, P. 2008. Assessment of health related issues in individuals', couples', and families' daily life, *Zeitschrift für Gesundheitspsychologie*, 16(3), 146-149.

Contact:

M. Perrez (meinrad.perrez@unifr.ch), M. Reicherts, A. Horn, D. Schoebi, P. Wilhelm, I. Law

Preventive sensitivity training for mothers of babies at the age of 6 months

Further information:

<http://www.unifr.ch/psycho/site/units/klinische-psychologie/projects/sesam-project-b>

Selected Publications:

Hänggi, Y., Schweinberger, K., Gugger, N. & Perrez, M. (in press). Situations-Reaktions-Fragebogen zur Messung elterlicher Sensitivität (PS-SRQ): Konstruktion, Reliabilität und Vorstudie zur internen Validität. *Zeitschrift für Entwicklungspsychologie und Pädagogische Psychologie*

Contact:

M. Perrez (meinrad.perrez@unifr.ch) & Y. Hänggi with C. Fragnière, K. Schweinberger, L. Di Lorenzo

Physical punishment of children in Swiss and Russian families

Further information:

<http://www.unifr.ch/psycho/site/units/klinische-psychologie/projects/punishment-and-discipline>

Selected Publications:

Schöbi, D., Plancherel, B., Tumakov, M. & Perrez, M. 2006. La punition corporelle des enfants en Suisse et en Russie, *La revue internationale de l'éducation familiale*, 19, 53-75.

Schoebi, D. & Perrez, M. 2007. Bestrafungsverhalten von Erziehungsberechtigten in der Schweiz, *undKinder*, 80, 17-29.

Contact:

D. Schoebi & M. Tumakov, M. Perrez (meinrad.perrez@unifr.ch)

Online-training for parenting

Further information:

<http://elterntraining.ch/index.php?pid=1&langs=en> and <http://www.unifr.ch/psycho/site/units/klinische-psychologie/projects/online-training>

Selected Publications:

Hänggi, Y. & Perrez, M. 2007. Möglichkeiten und Grenzen neuer Medien zur primären Prävention bei Kindern und Jugendlichen. In: B. Röhrle (Ed.). *Prävention und Gesundheitsförderung*, Bd. II. P. 229-244. Tübingen: dgvt

Hänggi, Y. 2007. Online-Prävention am Beispiel des online-Elterntrainings zur Bewältigung von Familienstress. In: B. Röhrle (Ed.). *Prävention und Gesundheitsförderung*, Bd. II. P. 245-256. Tübingen: dgvt

Contact:

Y. Hänggi & M. Perrez (meinrad.perrez@unifr.ch)

European project “Family life and Professional Work – Conflict and Synergy”

Extended project on China and Russia

Further information:

<http://www.unifr.ch/psycho/site/units/klinische-psychologie/projects/famwork>

Selected Publications:

Ababkov, V., Perrez, M., Kaidanovskaya, E. & Schöbi, D. 2004. Professional work and family life. Systematic self-observation of full families with preschool children in St. Petersburg, *Issues of Psychology. Journal of the Russian Academy of Educational Science*, 6, 44-53.

Schoebi, D., Wang, Z., Ababkov, V. & Perrez, M. Partner effects of anger in close relationships: Are there cross-cultural differences in the dyadic co-regulation of anger? (submitted)

Contact:

Wang Zhiyun, Beijing Normal University,
Valentin Ababkov, St. Petersburg Bekhterov
Institute,
M. Perrez (meinrad.perrez@unifr.ch) & D. Schoebi

Dyadic and triadic perspectives in the development of early family interactions

Project description:

The research consists of a longitudinal study on the transition to parenthood in the perspective of attachment and the relational-systemic theory. The focus of the project regards the development of triadic and dyadic interactions in the family system from pregnancy to preschool age, considering protective and risk factors of the parents, the child and contextual sources of stress and support. The study includes a sample composed of 104 families, of a non clinical population recruited through the child birth preparation courses of the Padova clinical hospital. The procedure previews a multi-method approach including: (a) observational methods such as the Lausanne Trilogue Play (LTP, Fivaz-Depeursinge, Corboz-Warnery, 1999) and the Strange Situation Procedure (SSP, Ainsworth, Blehar, Water, Wall, 1978); (b) interviews such as the Adult Attachment Interview (AAI, George, Kaplan, Main, 1985) and the Symptom Check List (Robert-Tissot et al., 1987); (c) self-report questionnaire such as the Edinburgh Postnatal Depression Scale (EPDS, Cox, Holden, Sagovsky, 1987), the Infant Behavior Questionnaire (IBQ, Rothbart, Garstein 2002), the Dyadic Adjustment Scale (DAS, Spanier, 1976) and the Father Involvement Questionnaire (Frascarolo, 1994).

The main interest of the project concerns the Italian validation of the LTP procedure for the assessment of triadic family interactions with regard to: (a) families with different aged children from non clinical populations; (b) clinical populations (families with a drug-addicted adolescent, families with children with a psychological disease); (c) at risk groups (families with child with a Down Syndrome or atypical development).

Selected Publications:

Simonelli A., Fava Vizziello G.M., Bighin M., Petech (2006). La coppia nella transizione alla genitorialità tra adattamento e attaccamento. *Terapia Familiare*, 82, 47-71.
Simonelli A., Fava Vizziello G.M., Bighin M., De Palo F., Petech E. (2007). La transizione alla triade fra assunzione della genitorialità e riorganizzazione della coppia. *Età evolutiva*, 86, 92-99.

Contact:

Alessandra Simonelli, Ph.D.
(alessandra.simonelli@unipd.it),
Erika Petech, Ph.D. student
(erika.petech@unipd.it),
Mara Bighin, Ph.D. (mara.bighin@unipd.it),
Francesca De Palo, Ph.D. student
(francidepalo@hotmail.it),
Marilena Moretti, Ph.D. student
(marilena.moretti@unipd.it),
Department of Developmental and Social
Psychology, University of Padova, Italy

Pedophilia: etiology and mechanisms

Project description:

The general purpose of the project is to provide a preliminary explanation on the reasons for and mechanisms of pedophilia. The additional aims of the research are to look for the correlation between the sets of factors causing child sexual abuse and to classify perpetrators (on the basis of both the kinds of victims pursued and on the method used to manipulate them). The factors influencing sexual preferences towards children were examined in a sample of 350 male perpetrators sentenced and jailed for sexual offences against children. I ask the question whether and how the differences between factors causing abuse interfere with the type of abusers and with the differences in their method of action. Using an Integrated Theory of the Etiology of Sexual Offending by W.L. Marshall and H.E. Barbaree, the assumptions were built and sets of instruments (especially questionnaires) were constructed. Data is collected in 2008-2009.

Contact:

Maria Beisert (beisert@amu.edu.pl)

Recent Publications of some ESFR members

- Barni, D., León, E., **Rosnati, R.**, & Palacios, J. (2008). Behavioral and socioemotional adjustment in international adoptees: A comparison between Italian and Spanish adoptive parents' reports. *Adoption Quarterly*, 11, 4, 235-254.
- Beisert, M.** (2009). Counselling approaches when dealing with sex offenders. In D. Skowronski & M. Caetano (Eds), *Theoretical and Practical Issues in Sexual Counselling* (pp. 1-27). Sydney: Cengage Learning.
- Bodenmann, G.**, Plancherel, B., Beach, S.R., Widmer, K., Gabriel, B., Meuwly, N., Charvoz, L., Hautzinger, M., & Schramm, E. (2008). Effects of coping-oriented couples therapy on depression: a randomized clinical trial. *J Consult Clin Psychol.*, 76, 6, 944-54.
- Charvoz, L., **Bodenmann, G.**, Bertoni, A., **Iafate, R.**, & Giuliani, C. (2009). Is the partner who decides to divorce more attractive? A comparison between initiators and noninitiators. *Journal of Divorce and Remarriage*, 50, 1, 22-37.
- Denissen, J.J.A., van Aken, M.A.G., & **Dubas, J.S.** (2009). It takes two to tango: How parents' and adolescents' personalities link to the quality of their mutual relationship. *Developmental Psychology*, 45, 4, 928-941.
- Ditzen, B., Schaer, M., Gabriel, B., **Bodenmann, G.**, Ehlert, U., & Heinrichs, M. (2009). Intranasal oxytocin increases positive communication and reduces cortisol levels during couple conflict. *Biol Psychiatry*, 1, 65, 9, 728-31.
- Genoud, P.A., Brodard, F., **Reichert, M.** (2009). Facteurs de stress et burnout chez les enseignants de l'école primaire. / Stress factors and burnout in elementary school teachers. *European Review of Applied Psychology/Revue Européenne de Psychologie Appliquée*, 59, 1, 37-45.
- Greeff, A.P.**, & Du Toit, C. (2009). Resilience in remarried families. *American Journal of Family Therapy*, 37, 2, 114-126.
- Meunier, J.-C., & **Roskam, I.** (2009). Validation of the preschool and primary school form of a questionnaire assessing parents' childrearing behavior. *Journal of Clinical Child and Adolescent Psychology*, 38, 1, 166-175.
- Paleari, F.G., **Regalia, C.**, Fincham, F. (2009). Measuring offence-specific forgiveness in marriage: The Marital Offence-Specific Forgiveness Scale (MOFS). *Psychological Assessment*, 21, 2, 194-209.
- Perrez, M.**, **Reichert, M.**, Hänggi, Y., Horn, A., Michel, G., **Schoebi, D.**, Wilhelm, P. (2008). Assessment of health related issues in individuals', couples', and families' daily life. *Zeitschrift für Gesundheitspsychologie*, 16, 3, 146-149.
- Preisig, M., Waeber, G., Vollenweider, P., Bovet, P., Rothen, S., **Vandeleur, C.**, Guex, P., Middleton, L., Waterworth, D., Mooser, V., Tozzi, F., & Muglia, P. (2009). The PsyCoLaus study: methodology and characteristics of the sample of a population-based survey on psychiatric disorders and their association with genetic and cardiovascular risk factors. *BMC Psychiatry*, 9, 9.
- Randall, A.K., & **Bodenmann, G.** (2009). The role of stress on close relationships and marital satisfaction. *Clin Psychol Rev.*, 29, 2, 105-15.
- Regalia, C.** (2009). Review of Communicating forgiveness. *Journal of Language and Social Psychology*, 28, 1, 111-112.
- Rieder, S., **Perrez, M.**, **Reichert, M.**, & Horn, A. (2008). Interpersonal emotion regulation in the family: a review of assessment tools. In A.M. Fontaine & M. Matias (Eds.), *Family, Work and Parenting. International Perspectives* (p. 17-45). Porto: Livpsic.
- Roest, A., **Dubas, J. S.**, & **Gerris, J. R. M.** (2009). Value transmissions between fathers, mothers, and adolescent and emerging adult children: The role of the family climate. *Journal of Family Psychology*, 23, 2, 146-155.
- Rönkä, A.**, & **Korvela, P.** (2009). Everyday family life: Dimensions, approaches and current challenges. *Journal of Family Theory and Review*, 1, 87-102.
- Rönkä, A.**, Malinen, K., Kinnunen, U., Tolvanen, A., & Lämsä, T. (2009). Capturing daily family dynamics via text messages: Development of the mobile diary. *Community, Work & Family*, 1-17.
- Roskam, I.**, & Meunier, J.C. (2009). How do parenting concepts vary within and between the families? *European Journal of Psychology of Education*, 24, 33-47.
- Rosnati, R.**, Montirosso, R., & Barni, D. (2008). Behavioral and emotional problems among Italian international adoptees and non-adopted children: Father's and mother's reports. *Journal of Family Psychology. Special Issue: Public health perspectives on family interventions*, 22, 4, 541-549.
- Rossi, G.**, (2009). Development and dynamics of the family in Southern Europe. In Kapella O. et al. (Eds), *Die Vielfalt der Familie*, Barbara Budrich, Opladen & Farmington Hills, MI.
- Rothen, S., **Vandeleur, C.L.**, Lustenberger, Y., Jeanprêtre, N., Ayer, E., Fornerod, D., Gamma, F., Teichmann, T., Halfon, O., Ferrero, F., & Preisig, M. (2009). Personality traits in children of parents with unipolar and bipolar mood disorders. *Journal of Affective Disorders*, 113, 133-141.

Rothen, S., Vandeleur, C.L., Lustenberger, Y., Jeanprêtre, N., Ayer, E., Gamma, F., Halfon, O., Fornerod, D., Ferrero, F., & Preisig, M. (2009). Parent-child agreement and prevalence estimates of diagnoses in childhood: Direct interview versus family history method. *International Journal of Methods in Psychiatric Research*, 18, 2, 96-109.

Scabini, E., & Rossi, G., (Eds.) (2009). *La migrazione come evento familiare* [Migration, a family transition]. Studi Interdisciplinari sulla Famiglia n. 23, Milano, Vita e Pensiero.

Simonelli, A., Fava Vizziello, G., Petech, E., Finotti, S. (2008). La genitorialità tra “crisi” della coppia e riorganizzazione dell’attaccamento. *Rivista di Studi Familiari*, 13, 1, 33-55.

Simonelli A., Fava Vizziello G.M., Petech E., Bettega V. (2008). Relazione di coppia, ruolo paterno e genitorialità. Esistono predittori della qualità della relazione triadica padre-padre-bambino? *Psicologia Sociale*, 3, 447-472.

Simonelli, A., Fava Vizziello, G.M., Bighin, M., & De Palo, F. (2009). Analisi preliminari di validazione del Lausanne Triadic Play pre-natale per lo studio delle competenze genitoriali in gravidanza. *Età Evolutiva*, 92, 5-17.

Simonelli A., Fava Vizziello, G.M., Petech, E., Ballabio, M., & Bisoni, E. (2009). Il Lausanne Trilogue Play: potenzialità diagnostiche e prospettive di intervento nella valutazione delle competenze interattive familiari. *Infanzia e Adolescenza*, 8, 1, 1-12.

Wierda-Boer, H.H., **Gerris, J. R. M.,** & Vermulst, A.A. (2009). Managing multiple roles: Personality, stress, and work-family interference in dual-earner couples. *Journal of Individual Differences*, 30,1, 6-19.

Wierda-Boer, H.H., **Gerris, J. R. M.,** & Vermulst, A.A. (2008). Adaptive strategies, gender ideology, and work-family balance among Dutch dual earners. *Journal of Marriage and Family*, 70, 4, 1004-1014.

Interested in bringing your matters in?

**Make them visible to all members and friends of the ESFR
via the Newsletter of the European Society on Family Relations!**

Would you like to see your department featured in the newsletter? Do you want to present your current research projects or announce your recent publications? Are there other recent facts and findings that you would like to see appear in the newsletter? Are there events you want to report about? Or are there any other topics... ?

Please contact silvia.ruppenthal@destatis.de

The ESFR Newsletter is electronically published once or twice per year in
Spring/Summer and Autumn/Winter.

Our heartiest thanks to Judith Semon Dubas for her previous work on the newsletter! We wish her a continued fulfilling and stimulating experience in her function as the Editor of Family Science!

edited by

Silvia Ruppenthal, Federal Institute for Population Research, Wiesbaden, Germany,
silvia.ruppenthal@destatis.de

Caroline Vandeleur, Department of Psychiatry, Geneva University Hospital, Geneva, Switzerland,
Caroline.Vandeleur@hcuge.ch

Interested in Joining the ESFR? Please visit our website at www.esfr.org. Questions concerning membership may be directed to our treasurer, Caroline Vandeleur.